

presents:

# IntegratedEA

STRATEGY • OPERATIONS • TECHNOLOGY

**www:** <http://www.integrated-ea.com>  
**HashTag:** #IEA13  
**Twitter:** @IntegratedEA





Ministry  
of Defence



# How architecting is helping support a migration towards mobile computing

**Name: Kevin Wallis**

**Date: 8 March 2013**

# Mobile Computing

- What is meant by mobile computing and why the NTA believes it is essential to transform Defence
- The challenges faced by Defence in their move towards mobile computing
- Why an enterprise view is essential in order to make the correct investment decisions
- How the NTA is using an enterprise approach to architecting as part of the future Network Transformation

# What is Mobile Computing and why should we care?

- Changing expectation of where defence activities will be carried out.
- New technologies driving change
- More smartphones than computers
- New opportunities... New risks

# Challenges to Mobile Computing

# Challenges to Mobile Computing

- User aspiration and enterprise interpretation

The User...



The Enterprise...



# Challenges to Mobile Computing - Requirements

What the User wants...



What the enterprise saw



# Challenges to Mobile Computing

## - Security

What the User wants...

What the enterprise wants





# Challenges to Mobile Computing

## - Applications

What the User wants...



The enterprise view



What was likely to happen under new operating model if an enterprise view wasn't given?

# What might happen without an enterprise view...

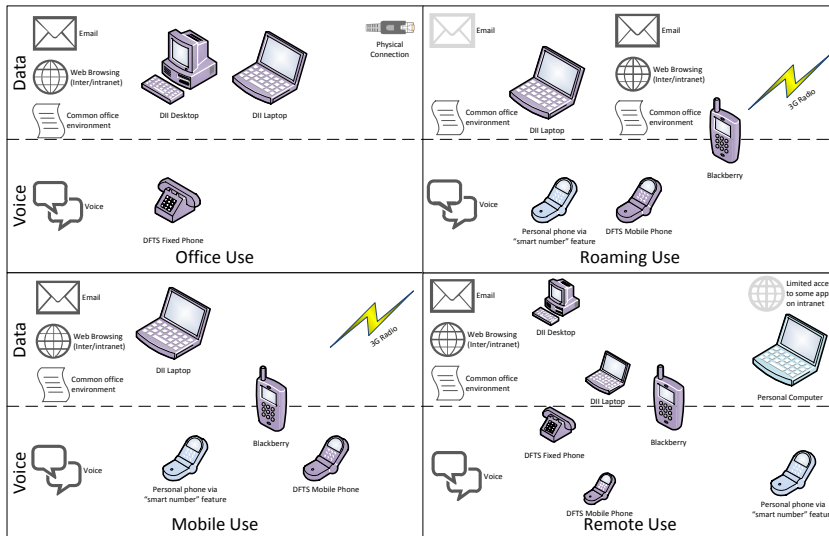


# What has NTA done to achieve an enterprise view?

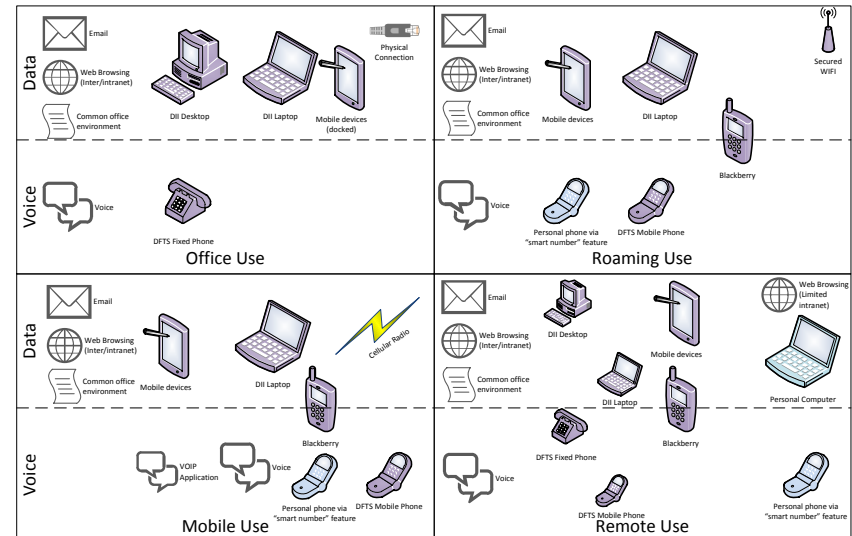
# How the NTA used EA to drive mobile in Defence

- Abstracted users into limited number of “roles”
- Developed transition architectures showing how to get where we wanted to be regarding end user devices...

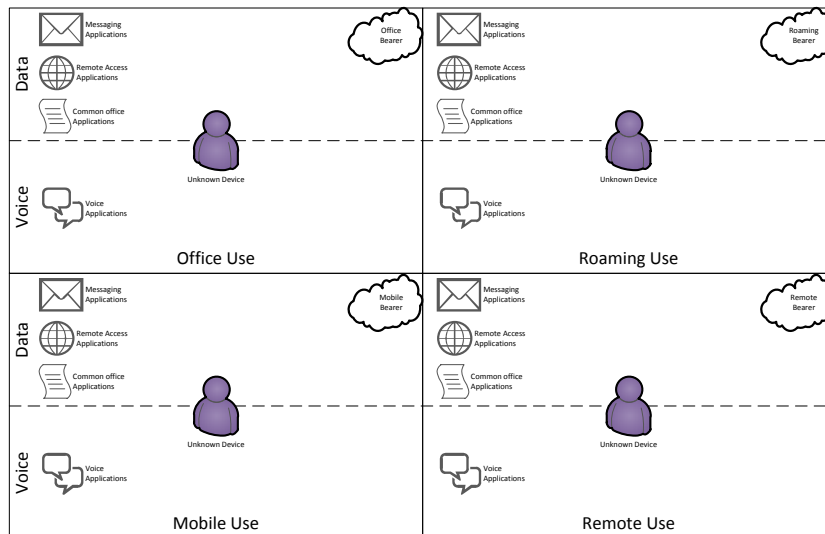
# Transition Architectures for User Devices



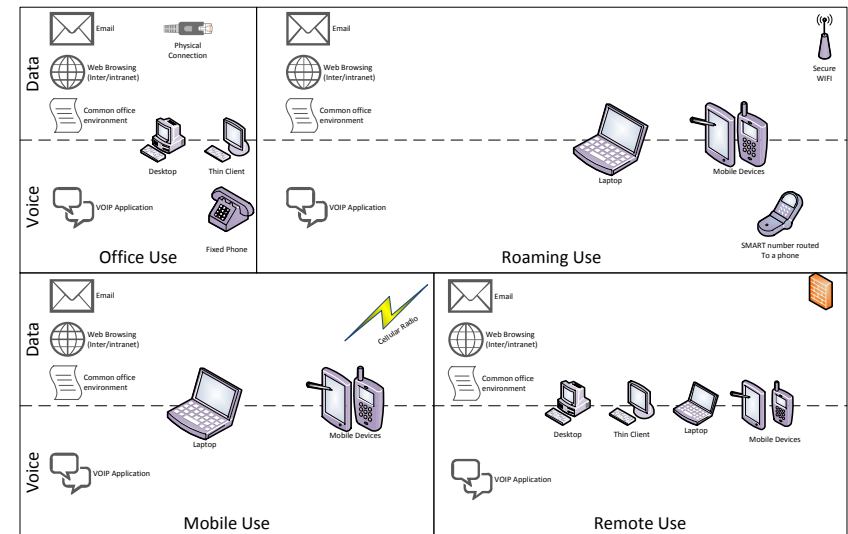
2012 IL0-3



2013 (Tier 1 "Official")



2020



2015 (Tier 1 "Official")

# How the NTA used EA to drive mobile in Defence

- Developed transition architectures showing how to get where we wanted to be regarding end user devices...
- Realised we didn't have any enterprise direction to validate where we wanted to be
- Had a think...
- Realised we needed a vision for Mobile Computing
- Produced a vision...

# The NTA Vision

*“A highly mobile workforce equipped with mobile end user devices that provide secure access to information and services at any time from offices, at home and on the move in order to obtain greater operational effectiveness.”*

Moving from...	...to
Limited connectivity	Range of Connectivity
Email/IM communications	Range of collaborative applications and tools
IT provider chooses the PC	Greater user choice
Primary device is fixed	Primary device is mobile
Enterprise chooses how applications are delivered	Users want channel choice to support their activities
IT has control	Freedom to innovate
One device, one task	One device, many tasks
Single device ownership	Multiple device ownership
Management and security inside the firewall	Boundary-less security and manageability



# The Vision Document

- Three main threads
  - Embrace mobile devices
  - Move towards “apps”
  - Evolve governance



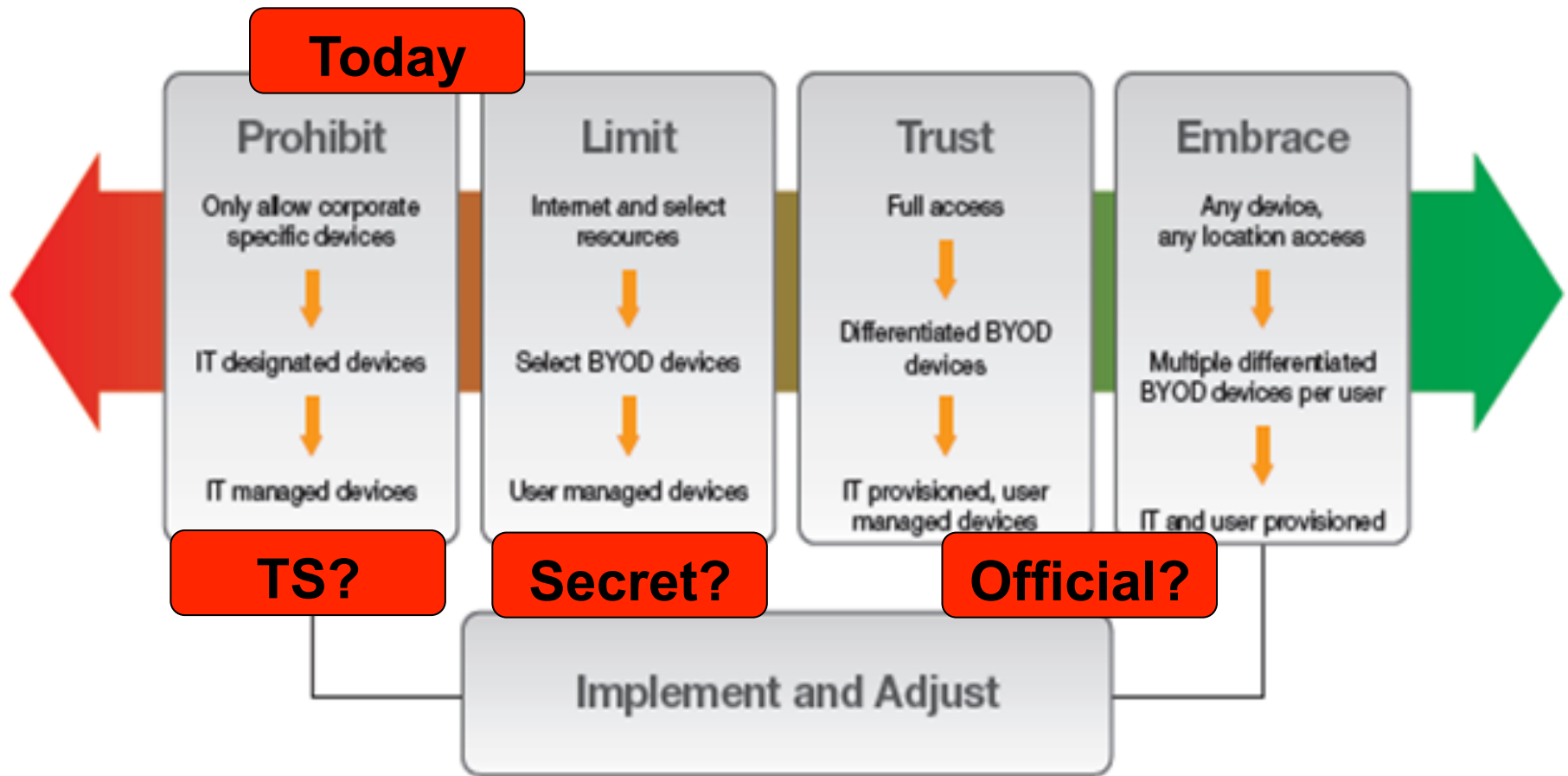
# Embrace mobile devices

- Identify mobile computing devices appropriate to needs of Users
- Develop secure wireless capabilities appropriate for the various security tiers
- Develop mobile device security architecture
- Develop mobile device application infrastructure

# Move to atomic mobile apps

- Move from monolithic applications such as JPA, HRMS etc to “apps” that meet specific business needs – “submit a claim”, “book leave”
- Large number of governance questions
  - Who can develop?
  - What freedoms and constraints in developing & deploying?
  - Do we need an “Apps Store”?
  - How do we patch?

# Evolve Governance



# How successful has it been?

# Progress to date

- Vision produced and communicated to limited stakeholder community
- Transition architectures drafted
- Engaged with DCNS and FLCs to shape future activity
- Engaged with DIST to develop secure tablet proof of concept to align with vision
- Resurrected work looking at wireless communications in Corsham with view to replicate at other sites if successful

# Conclusions

- Enterprise Architecture is helping to translate User expectation and need into deliverable solutions.
- Require greater emphasis on non-functional requirements.
- Architectural artefacts that aren't communicated serve no purpose

